

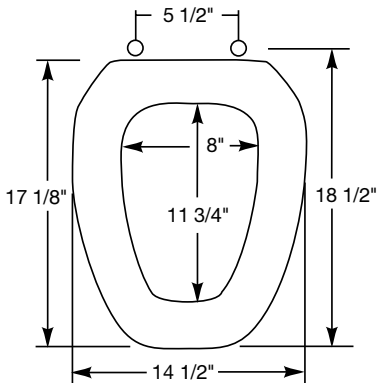


R E S I D E N T I A L M O L D E D W O O D S E A T S



124 0215

Seats shall be No. 124 0215 as manufactured by Bemis Manufacturing Co. Seats shall be molded wood, multi-coat enamel finish with closed front and cover to fit elongated Eljer Emblem bowl. Color-matched bumpers and hinges. Top-Tite® hinges with non-corrosive top-tightening bolts and wing nuts. Color to be _____. (specify white or fixture manufacturer's color.)



**TOP-TITE® HINGES
WITH BOLT
AND WING NUT**



**LOCKED-IN
TOP-TITE® HINGE**

Ring thickness is 13/16"
Ring thickness including the bumper is 1"
Height of the seat with cover is 2-1/2"