

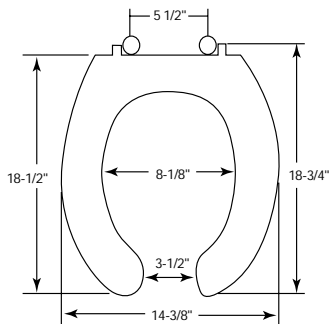


COMMERCIAL THERMOSET SEATS



495SSC

Seats shall be No. 495SSC as manufactured by Bemis Manufacturing Co. Seats shall be extra heavy weight and made of thermoset fireproof material. Seats shall be open front less cover for elongated bowl and feature large molded-in bumpers. Self-sustaining and external check hinge to feature 300 Series stainless steel posts that holds seat in any raised position up to 11 degrees beyond vertical. Uses 300 Series stainless steel hardware. Color to be white.



SELF-SUSTAINING AND
EXTERNAL CHECK
HINGES WITH 300
SERIES STAINLESS
STEEL POST



EXTERNAL
CHECK HINGE

Ring thickness is 3/4"
Ring thickness including the bumper is 1"
Height of the seat is 1-1/2"